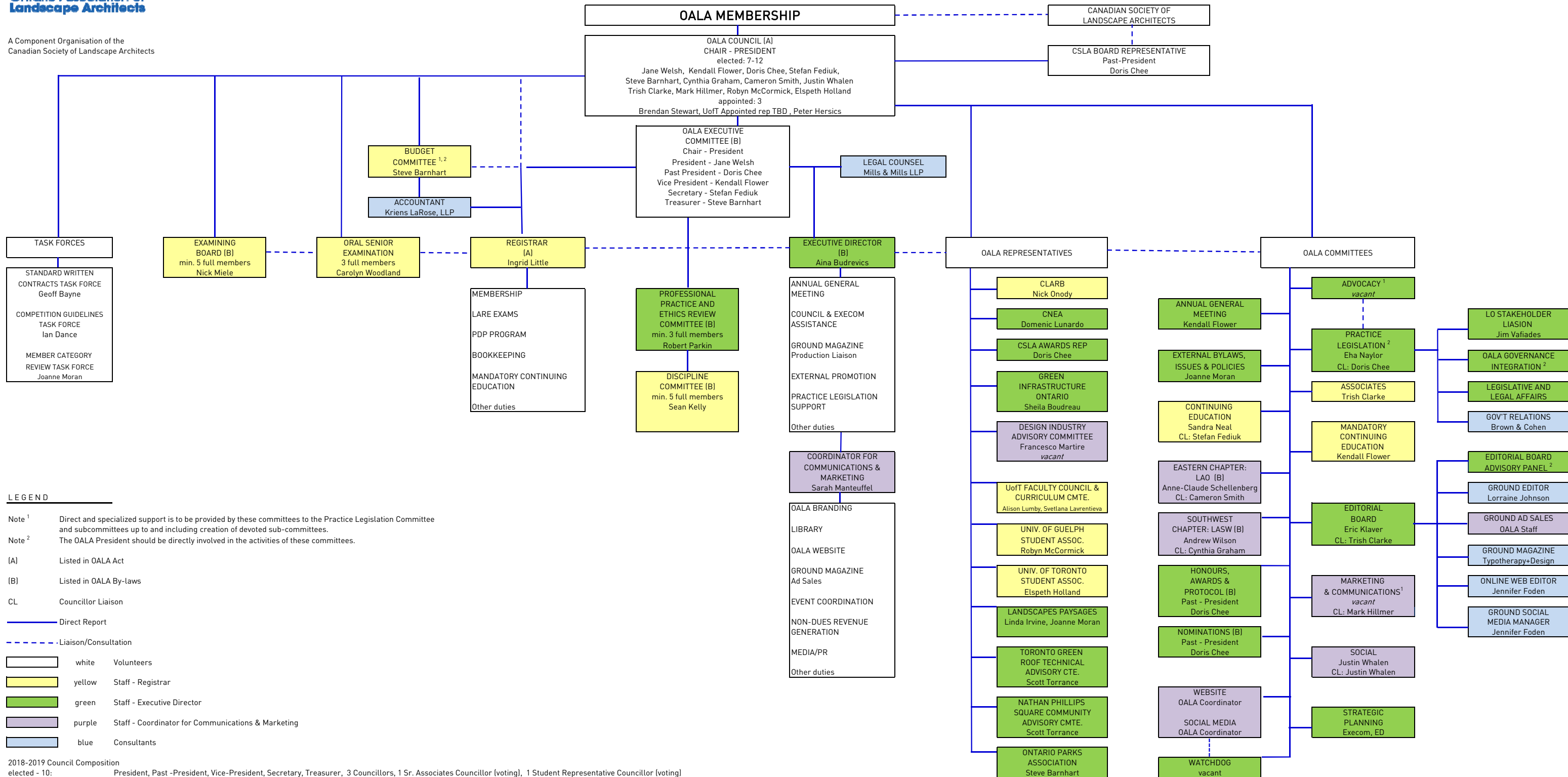


A Component Organisation of the  
Canadian Society of Landscape Architects



## LEGEND

Note <sup>1</sup> Direct and specialized support is to be provided by these committees to the Practice Legislation Committee and subcommittees up to and including creation of devoted sub-committees.  
 Note <sup>2</sup> The OALA President should be directly involved in the activities of these committees.

(A) Listed in OALA Act  
 (B) Listed in OALA By-laws  
 CL Councillor Liaison

— Direct Report  
 - - - Liaison/Consultation

<span style="display:inline-block; width:15px; height:15px; border:1px solid black; background-color:white;"></span>	white	Volunteers
<span style="display:inline-block; width:15px; height:15px; border:1px solid black; background-color:yellow;"></span>	yellow	Staff - Registrar
<span style="display:inline-block; width:15px; height:15px; border:1px solid black; background-color:green;"></span>	green	Staff - Executive Director
<span style="display:inline-block; width:15px; height:15px; border:1px solid black; background-color:purple;"></span>	purple	Staff - Coordinator for Communications & Marketing
<span style="display:inline-block; width:15px; height:15px; border:1px solid black; background-color:blue;"></span>	blue	Consultants

2018-2019 Council Composition  
 elected - 10: President, Past -President, Vice-President, Secretary, Treasurer, 3 Councillors, 1 Sr. Associates Councillor (voting), 1 Student Representative Councillor (voting)  
 appointed - 3: Univ. of Guelph Educator, Univ. of Toronto Educator, Lay Councillor  
 non-voting councillors - 1 Jr. Associate Councillor (non-voting) 1 Student Representative (non-voting)