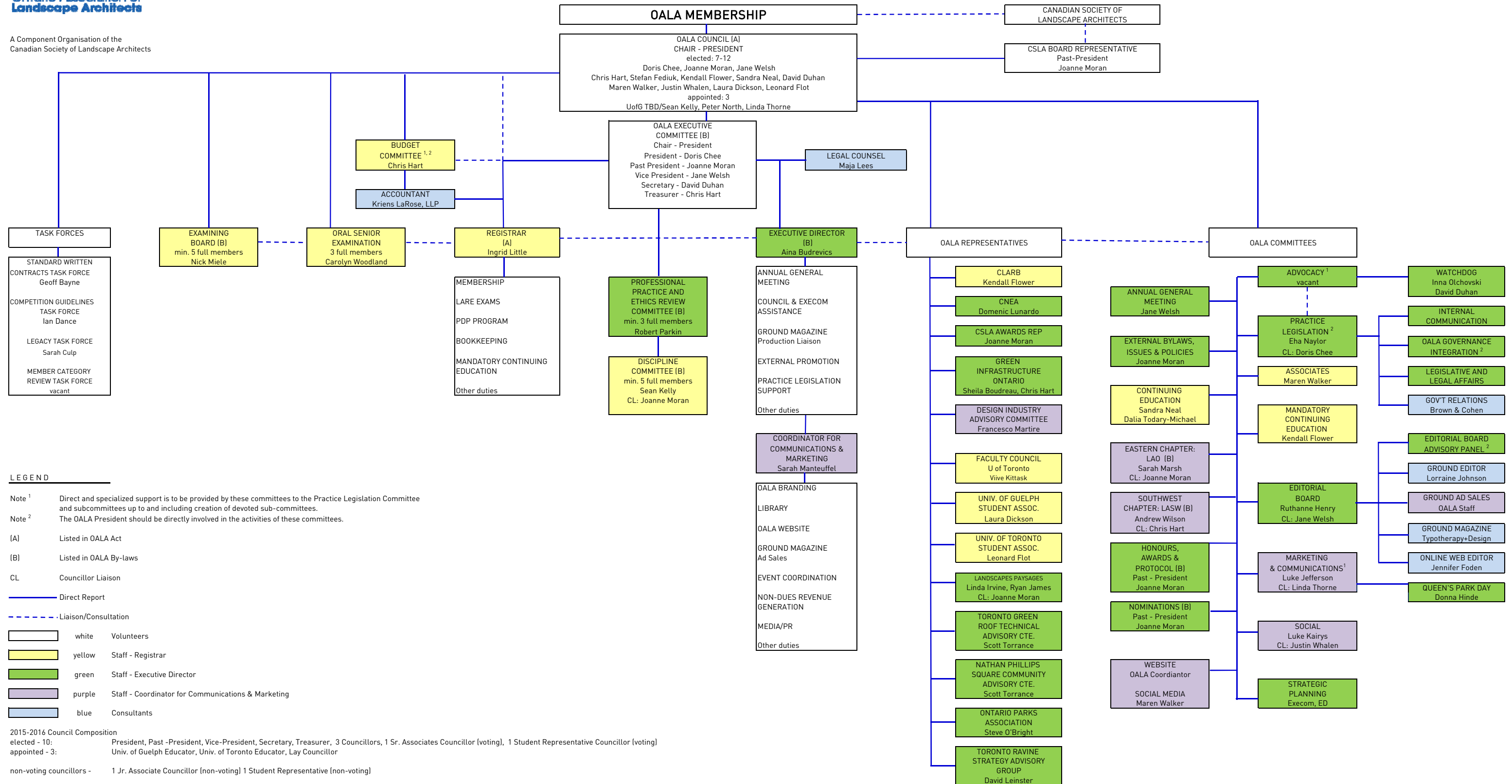


OALA ORGANIZATIONAL STRUCTURE 2016

November 1, 2016

Approved by OALA Council May 9, 2016



LEGEND

Note 1 Direct and specialized support is to be provided by these committees to the Practice Legislation Committee and subcommittees up to and including creation of devoted sub-committees.
 Note 2 The OALA President should be directly involved in the activities of these committees.

(A) Listed in OALA Act
 (B) Listed in OALA By-laws
 CL Councillor Liaison

— Direct Report
 - - - Liaison/Consultation

white Volunteers
 yellow Staff - Registrar
 green Staff - Executive Director
 purple Staff - Coordinator for Communications & Marketing
 blue Consultants

2015-2016 Council Composition
 elected - 10: President, Past -President, Vice-President, Secretary, Treasurer, 3 Councillors, 1 Sr. Associates Councillor (voting), 1 Student Representative Councillor (voting)
 appointed - 3: Univ. of Guelph Educator, Univ. of Toronto Educator, Lay Councillor
 non-voting councillors - 1 Jr. Associate Councillor (non-voting) 1 Student Representative (non-voting)